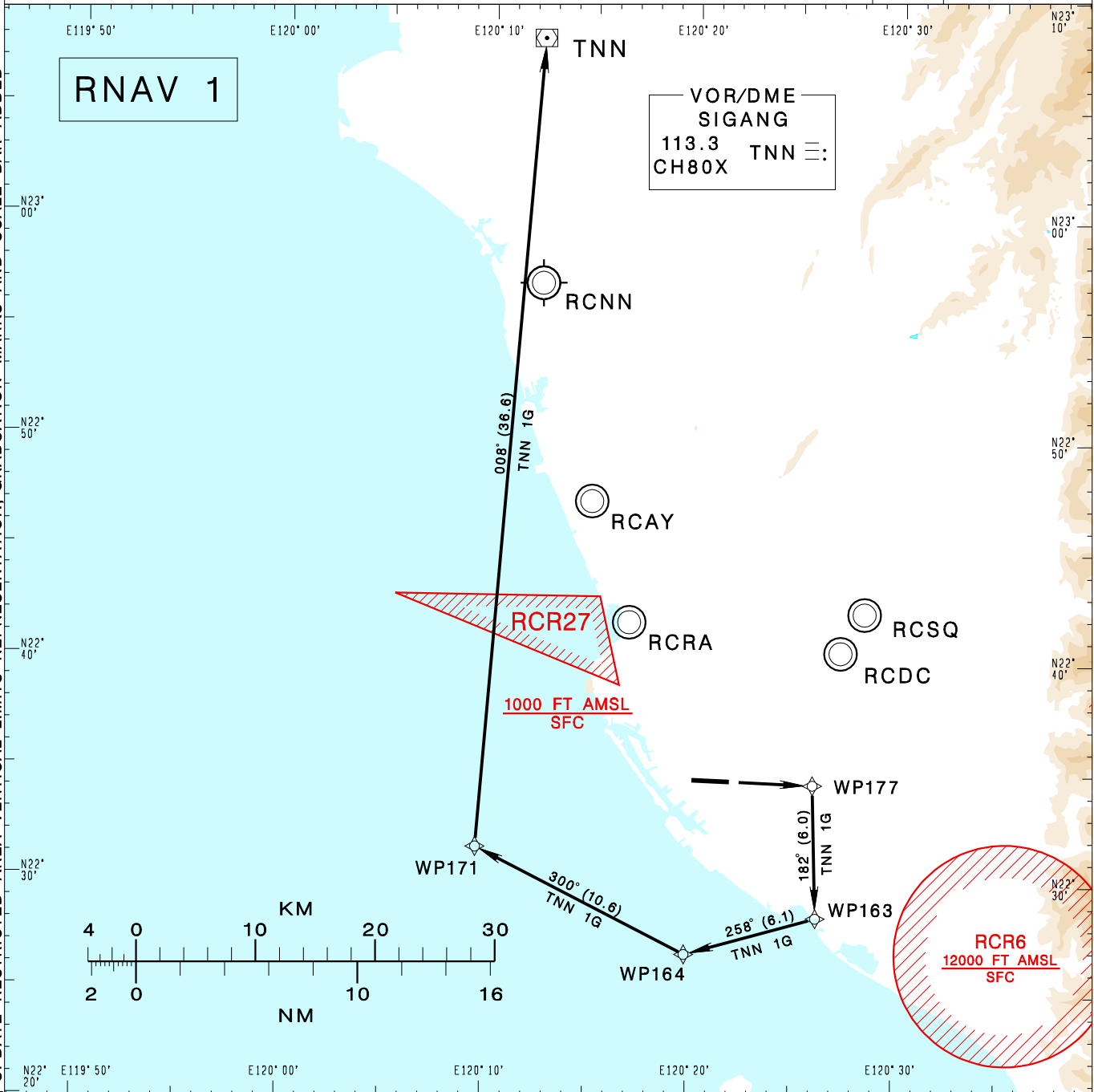


**高雄國際機場**  
**KAOHSIUNG INTL AD**

**RCKH SID**  
**TNN 1G RNAV(RWY09)**

KAOHSIUNG APP 124.7 125.7	KAOHSIUNG TWR 118.7 120.7	ATIS 127.8		
Apt Elev: 32'		Trans Level: FL130		Trans Alt: 11,000'
BEARINGS ARE MAGNETIC; DISTANCES ARE NAUTICAL MILES; ELEVATIONS, HEIGHTS IN FEET				

CHANGES: NEW PAGE NUMBER UPDATE RESTRICTED AREA VERTICAL LIMITS REPRESENTATION, GRADUATION MARKS AND SCALE BAR ADDED



**SIGANG ONE GOLF RNAV DEPARTURE**  
 Climb on RWY HDG until leaving 540ft, then direct to WP177, then to WP163, WP164, WP171, TNN.  
 Cross WP177 at or above 1,000ft.  
 Cross WP163 at or above 3,000ft.  
 Cross WP164 at or above 4,000ft.  
 Cross WP171 at or above 8,000ft.

- NOTE**
1. Minimum climb gradient required: 6.0%(365ft/NM) until WP163. Speed restriction of 210KT IAS maximum until WP163, 230KT IAS maximum until WP164.
  2. Caution: pier cranes, terrain and stacks east, west and south of airport.
  3. ATS surveillance required.